



Take Control of Your Lighting.

Bright Light Systems Nova XHM (High Mast) LED luminaire is specifically designed for harsh operating environments found in ports, airports, and rail yards. Consuming less than 500 watts, the Nova XHM dramatically reduces energy costs by almost 55% when compared to traditional HID lighting. Our high-brightness LED Modules are IP68 rated and come with a UV resistant, high-impact polycarbonate lens. A 100,000 hour (L70) lifetime minimizes maintenance expense and enables a simple payback of typically less than three years. Wireless control integrates with the Bright Light Management System (BLMS).



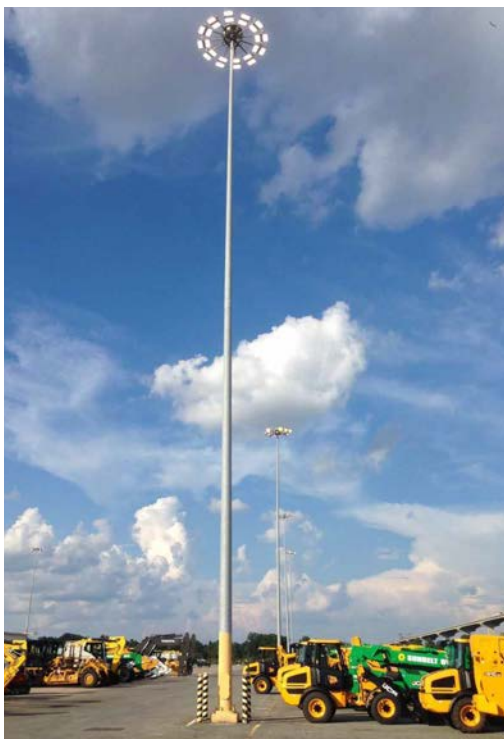
Features

- Lightweight, Low Profile Design
- Reduce Energy Costs by 55%
- Improved Color Rendering
- LED Lifetime L70 @ 100,000 Hours
- IP68 Rated LED Modules
- UV Inhibiting Precision Molded Lens
- NEMA Twist-Lock Wireless Control
- DLC Premium Listed
- Suitable for Wet Location
- 5-Year Limited Warranty

Specifications

Light Source	10 High Brightness LED modules
Fixture Efficacy	>150 lm/w
Lumen Maintenance (L70)	100,000 hrs
Driver Lifetime	100,000 hrs @ 65°C Case Temperature
Input Voltage	120v - 480v 50/60Hz
Power Factor	>.95 @ 277v
THD	<10%
Surge Protection	10kV/10kA
Color Temperature	3000K, 4000K, 5000K, 5700K
CRI	>70/80
Measurements	27.1"L x 18.7"W x 10.2"H
Weight	39.5 lbs (17.9 kg)
EPA (Windload)	1.21 ft ²

Application



Performance

Optic	Drive Current	Power	Efficacy	Lumens (+/-2%)	Lifetime
H25	1050 mA	500 w	153 lm/w	76,356	100,000 hrs
H40	1050 mA	500 w	160 lm/w	80,840	100,000 hrs
H60	1050 mA	500 w	153 lm/w	76,522	100,000 hrs
H90	1050 mA	500 w	156 lm/w	78,212	100,000 hrs
P2M	1050 mA	500 w	160 lm/w	80,275	100,000 hrs
S4S	1050 mA	500 w	140 lm/w	70,755	100,000 hrs
S50	1050 mA	500 w	150 lm/w	76,389	100,000 hrs

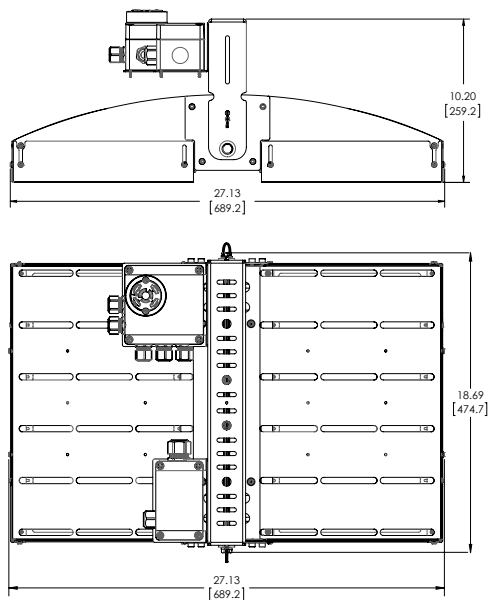
Additional

All components are UL recognized and rated from -40°C to +45°C ambient. Luminaire is supplied with Type HL (Hazardous Location) AC/DC power supply with high power factor (>.95) and low THD (<10%). Surge protection up to 10kV/10kA suppression in accordance with IEEE/ANSI C62.41.2 Category C High and UL1449. Durable housing is constructed from AL5052 aluminum. UV-resistant TGIC powder coat finish that is AAMA 2603 and ROHS compliant. Mounting options include tenon slip fitter for 2.375" (60mm) O.D. tenon or standard trunnion. Designed and manufactured in the USA.

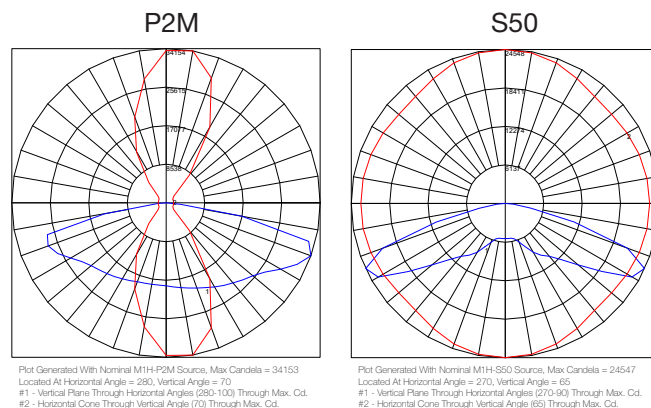
*Specifications subject to change without notice
*Actual wattage may differ by +/- 5% when operating between 277V-480V



Dimensions



Photometrics



Energy Efficiency

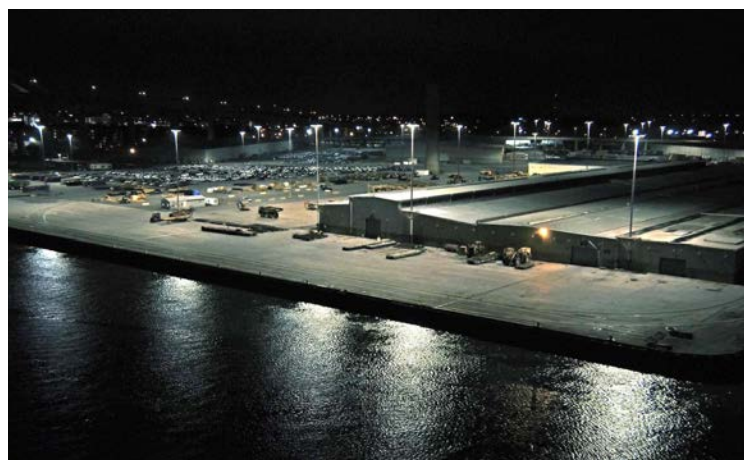
Light Source	1000W HPS	NOVA XHM LED
System Wattage	1200W	500W
Daily Usage	12 Hrs	12 Hrs
Annual Energy Consumption	5256 kWh	2190 kWh
Cost per kWh	\$0.13	\$0.13
Annual Operating Cost	\$683	\$285
Rated Lifetime	15,000 Hrs	100,000 Hrs
Replacement Lamps per Year	.29	.05
Maintenance Cost per Lamp	\$200	\$200
Annual Maintenance Cost	\$58	\$10
Total Annual Cost	\$741	\$295
Savings per Fixture		\$446
Estimated Utility Rebate	N/A	\$154
Total Savings per Fixture	N/A	\$600
Savings per Installation	500 units	\$300,000

*Maintenance Cost includes Labor, Lift Expense, Ballast, Etc.

*Rebate Based on \$0.05 per Annual kWh Saved, Utility Participation Varies

*Use of BLMS Wireless Controller Increases Annual Energy Savings by 30%

Intelligently Controlled Lighting



Ordering Information

Product	Modules (Flux)	Color	Distribution	Mount	Voltage	Options
NOVAXHM	B10 80,000 lm @1050mA	C730K 3000K C740K 4000K C750K 5000K C757K 5700K	H25 25 Degree, Flood H40 40 Degree, Flood H60 60 Degree, Flood P2M Medium, Asymmetric Type II S4S Short, Asymmetric Type IV S50 Symmetric Type V	T Trunnion	12 120-208V 24 240V 27 277V 34 347V 48 480V	BG Bird Guard PC Twist-lock Photocontrol SC Twist-lock Shorting Cap SF Slipfitter Mount for 2-3/8" O.D. Tenon WC Twist-Lock BLMS Wireless Controller
Example: NOVAXHM-B10C740KS50T48			Note: Wireless controller integrates with the Bright Light Management System (BLMS)			